

# ATTACHMENT A

- LEGEND:**
- APARTMENT:**
1. ENTRY
  2. LIVING
  3. BEDROOM
  4. KITCHEN
  5. BATHROOM
  6. LAUNDRY
  7. STUDY
  8. VOID
  9. VOID
  10. OPEN AIR LOBBY
  11. LOBBY
  12. STORAGE
- SERVICES:**
- a. ELEC.
  - b. COMM. AIR
  - c. HOSE REEL
  - d. WATER METER
  - e. WATER SUPPLY
  - f. WASTE WATER
  - g. GARAGE CHUTE
  - h. GARAGE EXHAUST
  - i. BATHROOM HYDRAULIC
  - j. BATHROOM VENTILATION
  - k. VENTILATION
  - l. STAIR PRESSURIZATION
  - m. COM. KITCHEN EXHAUST
  - n. COMM. KITCHEN EXHAUST
  - o. BASEMENT SUPPLY AIR
  - p. A/C CONDENSER
  - q. GREASE EXHAUST
  - r. RESIDENTIAL LIFT
  - s. DISABLED REFUGE
  - t. COMMON AREA EXHAUST
  - u. APARTMENT KITCHEN EXHAUST
  - v. KITCHEN HYDRAULIC
  - w. KITCHEN HYDRAULIC

- ABBREVIATION:**
- A PRECAST CONCRETE BALUSTRADE
  - B PRECAST CONCRETE COLUMN TO BE CLASS 1
  - C PRECAST CONCRETE PERGOLA
  - D INSTU CONCRETE
  - E FRAMELESS GLASS BALUSTRADE
  - F GREEN WALL
  - G LV
  - H LOWRIS
  - I PAVER 2
  - J POLISHED STAINLESS STEEL PRIMARY SCREEN
  - K POLISHED STAINLESS STEEL SECONDARY SCREEN
  - L BLAZE SYSTEM
  - M STEEL WALL BALUSTRADE
  - N TIMBER BATTEN SOFFIT TO BALCONY
  - O TIMBER DECKING
- GENERAL NOTE:** FOR CLAS 1 TO BE COMPARED SUBJECT TO COUNCIL'S CONFIRMATION OF PUBLIC DOMAIN LEVELS.

- DAISS:**
- A FOR SUBMISSION
  - B FOR DESIGN REVIEW
  - C FOR COORDINATING
  - D FOR COORDINATING
  - E FOR COORDINATING
  - F FOR COORDINATING
  - G FOR COORDINATING
  - H FOR COORDINATING
  - I FOR COORDINATING
  - J FOR COORDINATING
  - K FOR COORDINATING
  - L FOR COORDINATING
  - M FOR COORDINATING
  - N FOR COORDINATING
  - O FOR COORDINATING
  - P FOR COORDINATING
  - Q FOR COORDINATING
  - R FOR COORDINATING
  - S FOR COORDINATING
  - T FOR COORDINATING
  - U FOR COORDINATING
  - V FOR COORDINATING
  - W FOR COORDINATING
  - X FOR COORDINATING
  - Y FOR COORDINATING
  - Z FOR COORDINATING

**DATE:**

DATE	DATE
16/02/15	16/02/15

**CHECKED BY:** TCC

**DRAWN BY:** E. /K/P

**CHEMCHOW LITTLE PTY LTD**

PH (02) 9357 4833 FAX (02) 9357 4834

SUNSHINE HILLS, NSW 5040

ARCHITECTS REG. NO 6123 (A. CHEMCHOW)

**DA ISSUE NOT FOR CONSTRUCTION**

THIS DOCUMENT IS A PRELIMINARY DESIGN AND IS NOT TO BE USED FOR CONSTRUCTION. IT IS THE CLIENT'S RESPONSIBILITY TO OBTAIN ALL NECESSARY APPROVALS AND PERMITS FROM THE RELEVANT AUTHORITIES. THE CLIENT SHALL BE RESPONSIBLE FOR OBTAINING ALL NECESSARY APPROVALS AND PERMITS FROM THE RELEVANT AUTHORITIES. THE CLIENT SHALL BE RESPONSIBLE FOR OBTAINING ALL NECESSARY APPROVALS AND PERMITS FROM THE RELEVANT AUTHORITIES. THE CLIENT SHALL BE RESPONSIBLE FOR OBTAINING ALL NECESSARY APPROVALS AND PERMITS FROM THE RELEVANT AUTHORITIES.

**JOB TITLE:**

**BUILDING C: 55 ODEA AVENUE WATERLOO DC ODEA AVENUE DEVELOPMENT PTY LTD**

**DRAWING TITLE:**

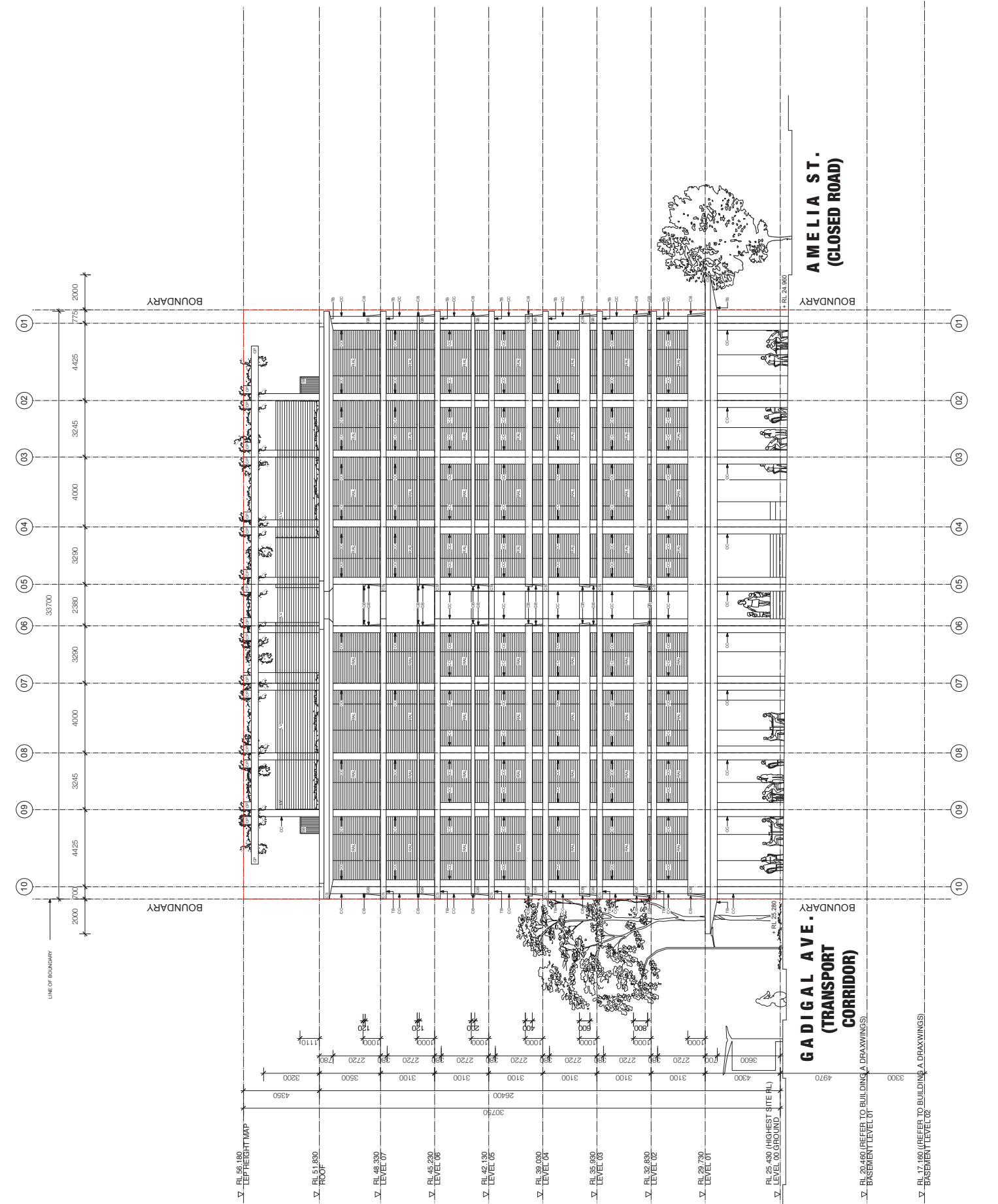
**SOUTH ELEVATION**

**DRAWING NO:**

**C-DA-3001**

SCALE: 1:100 (A1)	JOB NO: -	NO IN SET: -	AMENDMENT: J
0	10	20	30
40	50	60	70
80	90	100	100mm

FULL SIZE ON ORIGINAL



# ATTACHMENT A

**LEGEND:**

- APARTMENT:**
1. ENTRY
  2. LIVING
  3. BEDROOM
  4. BATHROOM
  5. KITCHEN
  6. LAUNDRY
  7. STUDY
  8. HALLWAY
  9. VOID
  10. OPEN AIR LOBBY
  11. COMMON LOBBY
  12. STORAGE

- SERVICES:**
- a. ELEC.
  - b. COMMUNICATION
  - c. HOSE REEL
  - d. WATER METER
  - e. WASTE WATER
  - f. GARAGE CHUTE
  - g. GARAGE EXHAUST
  - h. BATHROOM HYDRAULIC
  - i. KITCHEN HYDRAULIC
  - j. COMMUNICATION
  - k. COMMON EXHAUST
  - l. BASEMENT EXHAUST
  - m. BASEMENT SUPPLY AIR
  - n. AC COMPRESSOR
  - o. GREASE EXHAUST
  - p. RESIDENTIAL LIFT
  - q. DISABLED REFUGE
  - r. APARTMENT EXHAUST
  - s. KITCHEN HYDRAULIC

- ABBREVIATION:**
- CCB PRECAST CONCRETE BALUSTRADE
  - CC PRECAST CONCRETE COLUMN TO BE CLASS 1
  - CC PRECAST CONCRETE PERGOLA
  - CC INSTU CONCRETE
  - CCB FRAMELESS GLASS BALUSTRADE
  - CCB GREEN WALL
  - LV LOWERS
  - PAZ PAVES 2
  - PS POLISHED STAINLESS STEEL PRIMARY SCREEN
  - RAZ RAIN WATER HARVESTING / RETAINING/RECYCLABLE 60%
  - RAZ BLAZE SYSTEM
  - SB STEEL BAL. BALUSTRADE
  - TB TIMBER BATTEN SOFFIT TO BALCONY
  - TD TIMBER DECKING

**GENERAL NOTE:** FOR LEVELS TO BE COMPARED SUBJECT TO COUNCIL'S CONFIRMATION OF PUBLIC DOMAIN LEVELS.

- FOR DA ISSUE:**
- J FOR DA SUBMISSION
  - H FOR DA SUBMISSION
  - F FOR DA SUBMISSION
  - E FOR DA SUBMISSION
  - D FOR DA SUBMISSION
  - C FOR DA SUBMISSION
  - B FOR DA SUBMISSION
  - A FOR DA SUBMISSION

**DATE:**



**CLIENT:**  
**CHENCHOW LITTLE PTY LTD**  
 SUDBURY HILLS, NSW 2150  
 PH (02) 9357 4333 FAX: (02) 9357 4334  
 ARCHITECTS REG. NO. 6123 (A. CHENCHOW)

**DA ISSUE NOT FOR CONSTRUCTION**

THIS DOCUMENT IS PREPARED FOR THE CLIENT AND IS NOT TO BE USED FOR ANY OTHER PURPOSE. THE CLIENT ACCEPTS RESPONSIBILITY FOR THE ACCURACY OF THE INFORMATION PROVIDED AND THE DESIGNER'S LIABILITY IS LIMITED TO THE DESIGN AND CONSTRUCTION OF THE BUILDING. THE DESIGNER IS NOT RESPONSIBLE FOR THE DESIGN OF THE BUILDING OR THE CONSTRUCTION OF THE BUILDING. THE DESIGNER IS NOT RESPONSIBLE FOR THE DESIGN OF THE BUILDING OR THE CONSTRUCTION OF THE BUILDING. THE DESIGNER IS NOT RESPONSIBLE FOR THE DESIGN OF THE BUILDING OR THE CONSTRUCTION OF THE BUILDING.

**JOB TITLE:**

**BUILDING C: 55 ODEA AVENUE WATERLOO  
 55 ODEA AVENUE DEVELOPMENT PTY LTD**

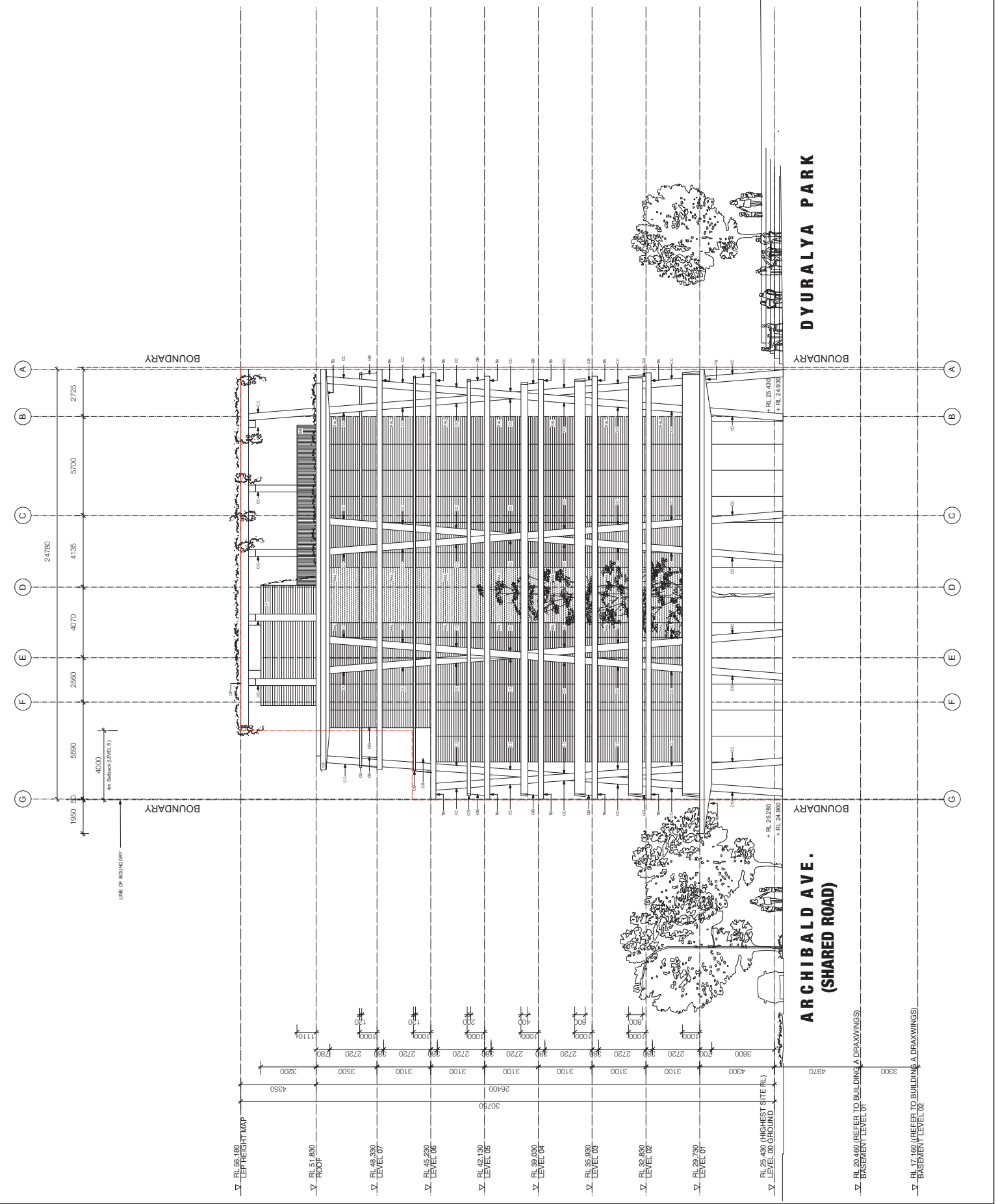
**DRAWING TITLE:**  
**EAST ELEVATION**

**DATE:** 16/02/15  
**DRAWN BY:** E. / K.F.  
**CHECKED BY:** T.C.C.

**DRAWING NO.:**  
**C-DA-3002**

**SCALE:** 1:100 (A1)  
**JOB NO.:** -  
**NO. IN SET:** J  
**AMENDMENT:** -

0 10 20 30 40 50 60 70 80 90 100mm  
 FULL SIZE ON ORIGINAL



**ARCHIBALD AVE.  
 (SHARED ROAD)**

**DYRALYA PARK**

▽ RL 56.180 (LEFFER HEIGHT MAP)  
 ▽ RL 51.890 ROOF  
 ▽ RL 48.930 LEVEL 07  
 ▽ RL 45.230 LEVEL 06  
 ▽ RL 42.130 LEVEL 05  
 ▽ RL 39.030 LEVEL 04  
 ▽ RL 35.930 LEVEL 03  
 ▽ RL 32.830 LEVEL 02  
 ▽ RL 29.730 LEVEL 01  
 ▽ RL 26.630 (HIGHEST SITE RL) LEVEL 00 GROUND  
 ▽ RL 24.530  
 ▽ RL 24.160 (REFER TO BUILDING A DRAWINGS) BASEMENT LEVEL 01  
 ▽ RL 17.160 (REFER TO BUILDING A DRAWINGS) BASEMENT LEVEL 02

# ATTACHMENT A

**LEGEND:**

APARTMENT
1. ENTRY
2. LIVING
3. BEDROOM
4. BATHROOM
5. KITCHEN
6. LAUNDRY
7. STUDY
8. HALLWAY
9. VOID
10. OPEN AIR LOBBY
11. LOBBY
12. STORAGE

**SERVICES:**

a. ELEC.
b. MECHANICAL
c. HOSE REEL
d. WATER METER
e. WASTE WATER
f. GARAGE CHUTE
g. GARAGE EXHAUST
h. BATHROOM HYDRAULIC
i. KITCHEN HYDRAULIC
j. COMM. HYDRAULIC
k. COMM. KITCHEN EXHAUST
l. BASEMENT SUPPLY AIR
m. AC COMPRESSOR
n. GREASE EXHAUST
o. RESIDENTIAL LIFT
p. DISABLED REFUGE
q. APARTMENT KITCHEN EXHAUST
r. KITCHEN HYDRAULIC

**ABBREVIATION:**

CB	PRECAST CONCRETE BALUSTRADE
CC	PRECAST CONCRETE COLUMNS TO BE CLASS 1
CC	PRECAST CONCRETE PERGOLA
CC	INSITU CONCRETE
CB	FRAMED GLASS BALUSTRADE
CB	FRAMED GLASS BALUSTRADE
CB	GREEN WALL
LV	LOWERS
P2	PAVER 2
PS	POLISHED STAINLESS STEEL PRIMARY SCREEN
PS	BLAZE SYSTEM / RETARDANT / INSULATED GLASS
SB	STEEL I/B/L BALUSTRADE
TS	TIMBER BATTEN SOFFIT TO BALCONY
TD	TIMBER DOORING

GENERAL NOTE: COOR LEVELS TO BE COMPARED SUBJECT TO COUNCIL'S CONFIRMATION OF PUBLIC COORDINATE LEVELS.

**REVISION:**

J	FOR DA ISSUE
H	FOR DA SUBMISSION
F	FOR DA SUBMISSION
E	FOR DA SUBMISSION
D	FOR DA SUBMISSION
C	FOR DA SUBMISSION
B	FOR DA SUBMISSION
A	FOR DA SUBMISSION

**DATE:**



**CLIENT:**

CHENCHOW LITTLE PTY LTD  
 5/112 SUTHERLAND STREET  
 SUTHERLAND, NSW 1585  
 PH: (02) 9357 4833 FAX: (02) 9357 4834  
 ARCHITECTS REG. NO 6123 (A. CHENCHOW)

**DA ISSUE**  
**NOT FOR CONSTRUCTION**

THIS DOCUMENT IS PREPARATORY AND NOT TO BE USED FOR CONSTRUCTION. ANY CONSTRUCTION OF THE PROJECT SHALL BE IN ACCORDANCE WITH THE REQUIREMENTS OF LOCAL LAWS AND REGULATIONS. THIS DRAWING IS THE PROPERTY OF CHENCHOW LITTLE PTY LTD. ANY REPRODUCTION OR UNAUTHORIZED USE OF THIS DRAWING WITHOUT THE WRITTEN PERMISSION OF CHENCHOW LITTLE PTY LTD. IS STRICTLY PROHIBITED. ALL RIGHTS RESERVED. THE DESIGNER ACCEPTS NO LIABILITY FOR ANY LOSS OR DAMAGE TO PERSONS OR PROPERTY ARISING FROM THE USE OF THIS DRAWING. THE DESIGNER'S LIABILITY IS LIMITED TO THE SERVICES PROVIDED HEREIN. THE CLIENT AGREES TO HOLD THE DESIGNER HARMLESS FROM ALL CLAIMS, DAMAGES, LOSSES AND EXPENSES, INCLUDING REASONABLE ATTORNEY'S FEES, THAT MAY BE ASSERTED AGAINST THE DESIGNER IN CONNECTION WITH THIS PROJECT. THE CLIENT'S USE OF THIS DRAWING IS LIMITED TO THE PROJECT AND SITE SPECIFICALLY IDENTIFIED HEREIN. ANY OTHER USE OF THIS DRAWING WITHOUT THE WRITTEN PERMISSION OF CHENCHOW LITTLE PTY LTD. IS STRICTLY PROHIBITED. ALL RIGHTS RESERVED.

**JOB TITLE:**

**BUILDING C: 55 ORDA AVENUE WATERLOO  
 55 ORDA AVENUE DEVELOPMENT PTY LTD**

**DRAWING TITLE:**

**WEST ELEVATION**

**DATE:**  
 16/02/15

**DRAWN BY:**  
 E. / K.F.

**CHECKED BY:**  
 T.C.C.

**DRAWING NO.:**

**C-DA-3003**

**SCALE:**  
 1:100 (A1)

**JOB NO.:**  
 1/1624

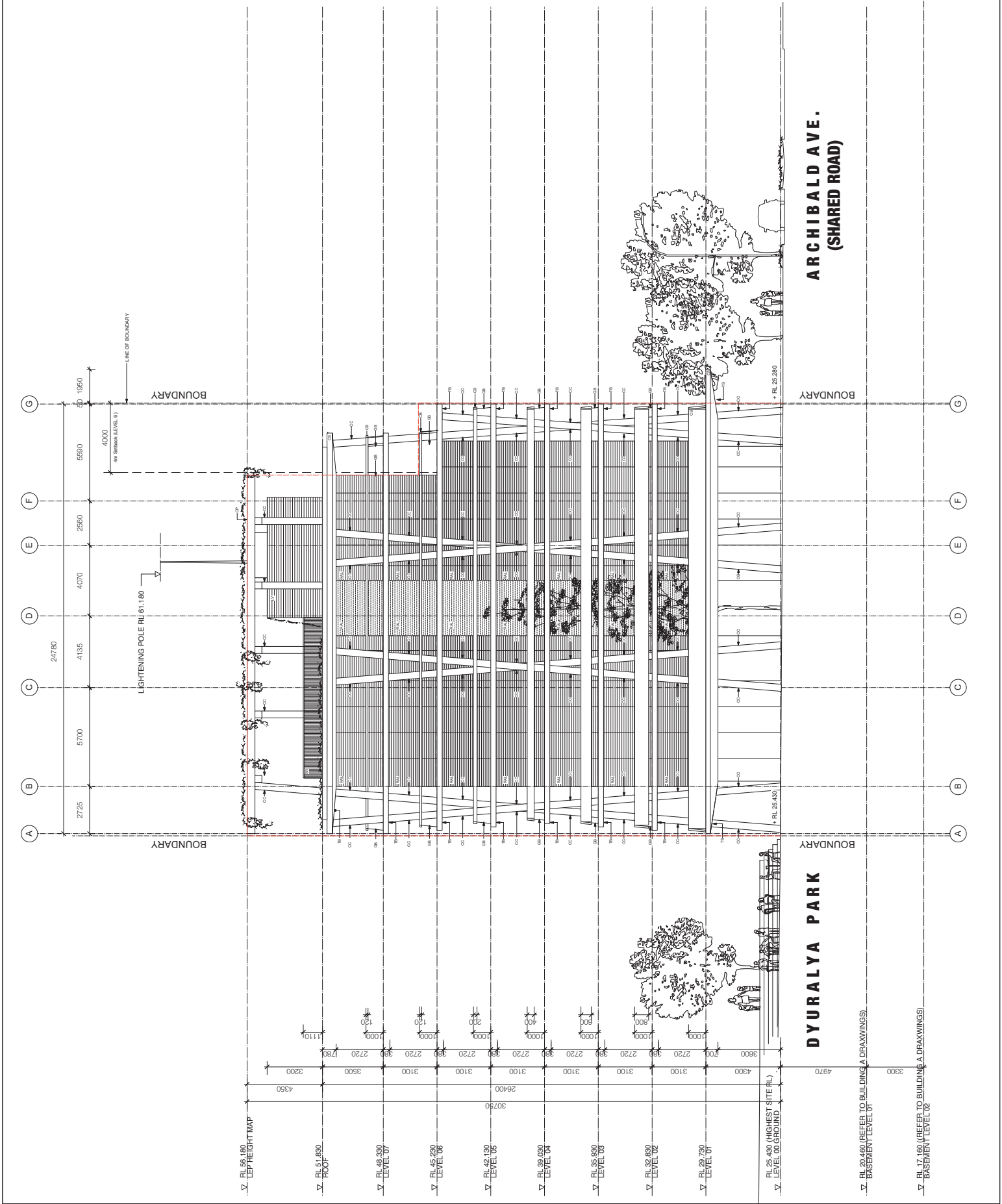
**NO IN SET:**

**AMENDMENT:**

**J**

**0 10 20 30 40 50 60 70 80 90 100mm**

**FULL SIZE ON ORIGINAL**



**ARCHIBALD AVE.  
 (SHARED ROAD)**

**DYURALYA PARK**

# ATTACHMENT A

**LEGEND:**  
APARTMENT  
1. APARTMENT ENTRY  
2. LIVING  
3. BEDROOM  
4. BATHROOM  
5. LAUNDRY  
6. STUDY  
7. VOID  
8. OPEN AIR LOBBY  
9. STAIRS  
10. OPEN AIR LOBBY  
11. STAIRS  
12. STORAGE

**SERVICES:**  
a. ELEC.  
b. COMMUNICATION  
c. FIRE  
d. WATER METER  
e. GARBAGE CHUTE  
f. GARBAGE EXHAUST  
g. WATER EXHAUST  
h. EXHAUST FROM MEAT COOKING  
i. EXHAUST FROM COFFINER  
j. EXHAUST FROM STOVE  
k. EXHAUST FROM DRYER  
l. EXHAUST FROM REFRIGERATOR  
m. EXHAUST FROM FREEZER  
n. EXHAUST FROM FREEZER  
o. EXHAUST FROM FREEZER  
p. EXHAUST FROM FREEZER  
q. EXHAUST FROM FREEZER  
r. EXHAUST FROM FREEZER  
s. EXHAUST FROM FREEZER  
t. EXHAUST FROM FREEZER  
u. EXHAUST FROM FREEZER  
v. EXHAUST FROM FREEZER  
w. EXHAUST FROM FREEZER  
x. EXHAUST FROM FREEZER  
y. EXHAUST FROM FREEZER  
z. EXHAUST FROM FREEZER

**ABBREVIATION:**  
CB PRECAST CONCRETE BALUSTRADE  
CC PRECAST CONCRETE COLUMN TO BE CLASS 1  
CIP PRECAST CONCRETE PERIODA  
CNS PRECAST CONCRETE NON-SUBSTRATE  
FG FRAMELESS GLASS BALUSTRADE  
GVA GREEN WALL  
LW LOW WALL  
LV LAUNDRIES  
PZ PAVEMENT  
PS POLISHED STAINLESS STEEL PRIMARY SCREEN  
RH POLISHED STAINLESS STEEL RAINWATER RECEPTACLE  
SB STEEL BALUSTRADE  
SLS STAINLESS STEEL LAUNDRY  
TB TIMBER BATTEN SOFFIT TO BALCONY  
TD TIMBER DECKING

**GENERAL NOTE:** FOR DETAILS TO BE COMPARED SUBJECT TO COUNCIL'S CONFIRMATION OF PUBLIC DOMAIN LEVELS.

**FOR DA ISSUE:**  
I FOR INFORMATION  
H FOR APPROVAL  
F FOR CONFIRMATION  
E FOR CONFIRMATION  
D FOR CONFIRMATION  
C FOR CONFIRMATION  
B FOR CONFIRMATION  
A FOR SUBMISSION

**CLIENT:**  
**JOZ**

**CLIENT:**  
**CHENCHOW LITTLE PTY LTD**  
SUITE 101, 101/102, 103/104  
STURDY HILLS, NSW 1580  
PH (02) 9357 4833 FAX (02) 9357 4834  
WWW.CHENCHOWLITTLE.COM.AU  
ARCHITECTS REG. NO. 8123 (A, CHENGHONG)

**DATE:**  
10/02/15

**DA ISSUE NOT FOR CONSTRUCTION**

**JOB TITLE:**  
**BUILDING C: 55 ODEA AVENUE WATERLOO**  
**OR ODEA AVENUE DEVELOPMENT PTY LTD**

**DRAWING TITLE:**  
**SECTION AA**

**DATE:**  
10/02/15

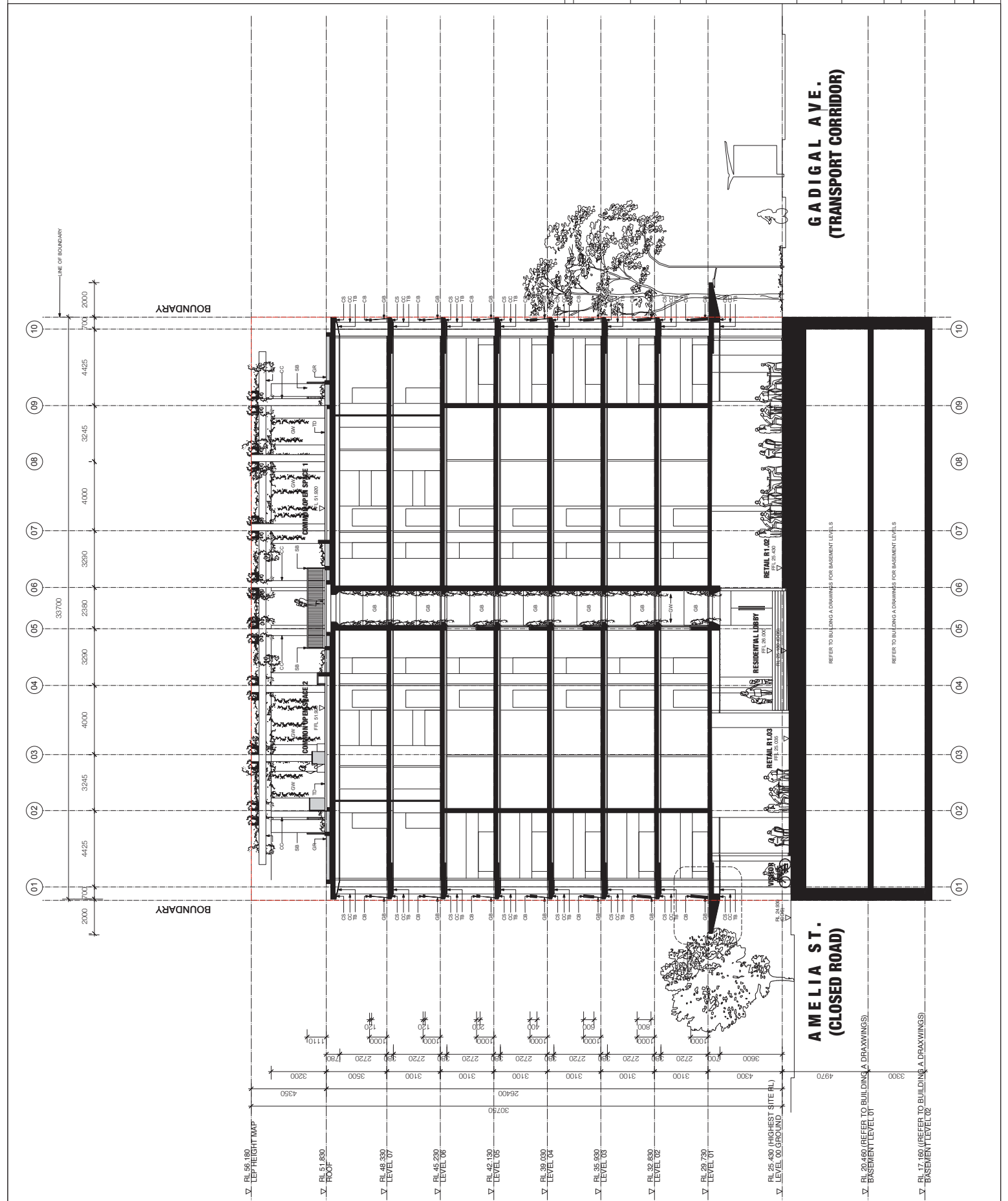
**DRAWN BY:**  
E. LFK

**CHECKED BY:**  
TCC

**DRAWING NO.:**  
**C-DA-3100**

**SCALE:**  
1:100 (A1)

**AMENDMENT:**  
**J**



**GADIGAL AVE. (TRANSPORT CORRIDOR)**

**AMELIA ST. (CLOSED ROAD)**

REFER TO BUILDING DRAWINGS FOR BASEMENT LEVELS

REFER TO BUILDING DRAWINGS FOR BASEMENT LEVELS

# ATTACHMENT A

- LEGEND:
- APARTMENT
  - 1. ENTRY
  - 2. LIVING
  - 3. BEDROOM
  - 4. BATHROOM
  - 5. KITCHEN
  - 6. LAUNDRY
  - 7. STUDY
  - 8. HALLWAY
  - 9. VOID
  - 10. OPEN AIR LOBBY
  - 11. LOBBY
  - 12. STORAGE

- SERVICES:
- a. ELEC.
  - b. GAS
  - c. HOSE REEL
  - d. WATER METER
  - e. WASTE WATER
  - f. GARAGE CHUTE
  - g. GARAGE EXHAUST
  - h. BATHROOM HYDRAULIC
  - i. KITCHEN HYDRAULIC
  - j. COM. KITCHEN EXHAUST
  - k. BATHROOM EXHAUST
  - l. BASEMENT SUPPLY AIR
  - m. AC COMPRESSOR
  - n. GREASE EXHAUST
  - o. RESIDENTIAL LIFT
  - p. DISABLED REFUGE
  - q. APARTMENT KITCHEN EXHAUST
  - r. APARTMENT KITCHEN EXHAUST
  - s. KITCHEN HYDRAULIC

- ABBREVIATION:
- CB PRECAST CONCRETE BALUSTRADE
  - CC PRECAST CONCRETE COLUMNS TO BE CLASS 1
  - CP PRECAST CONCRETE PERGOLA
  - CS INSTU CONCRETE
  - GB FRAMELESS GLASS BALUSTRADE
  - GM GREEN WALL
  - LV LOWAIRS
  - PZ2 PAVEMENT
  - PS POLISHED STAINLESS STEEL PRIMARY SCREEN
  - RA POLISHED STAINLESS STEEL SECONDARY SCREEN
  - RAZ POLISHED STAINLESS STEEL RAINWATER HARVESTING
  - RAZ BLAZE SYSTEM
  - SB STEEL BALUSTRADE
  - TB TIMBER BATTEN SOFFIT TO BALCONY
  - TD TIMBER DECKING

GENERAL NOTE: COOR LEVELS TO BE COMPARED SUBJECT TO COUNCIL'S CONFIRMATION OF PUBLIC DOMAIN LEVELS.

- CLIENT:
- L FOR LA RESSLE (NOTHING IN BASINENT SHOWER)
  - K FOR LA RESSLE (NOTHING IN SHOWER)
  - H FOR LA RESSLE (NOTHING IN SHOWER)
  - F FOR LA RESSLE (NOTHING IN SHOWER)
  - E FOR LA RESSLE (NOTHING IN SHOWER)
  - S FOR LA RESSLE (NOTHING IN SHOWER)
  - B FOR LA RESSLE (NOTHING IN SHOWER)
  - D FOR LA RESSLE (NOTHING IN SHOWER)
  - A FOR LA RESSLE (NOTHING IN SHOWER)



CLIENT: CHENCHOW LITTLE PTY LTD  
 30/31 STURRY HILLS, NSW 2000  
 PH (02) 9357 4833 FAX: (02) 9357 4834  
 WWW.CHENCHOWLITTLE.COM.AU  
 ARCHITECTS REG. NO 0123 (A, CHENCHOW)

DA ISSUE  
 NOT FOR CONSTRUCTION

THIS DOCUMENT IS PRELIMINARY AND NOT TO BE USED FOR CONSTRUCTION. IT IS THE PROPERTY OF CHENCHOW LITTLE PTY LTD. ALL RIGHTS RESERVED. NO PART OF THIS DOCUMENT IS TO BE REPRODUCED OR TRANSMITTED IN ANY FORM OR BY ANY MEANS, ELECTRONIC OR MECHANICAL, INCLUDING PHOTOCOPYING, RECORDING, OR BY ANY INFORMATION STORAGE AND RETRIEVAL SYSTEM, WITHOUT THE WRITTEN PERMISSION OF CHENCHOW LITTLE PTY LTD. ANY UNAUTHORIZED USE OF THIS DOCUMENT IS STRICTLY PROHIBITED. THE CLIENT ACCEPTS THAT THE INFORMATION CONTAINED IN THIS DOCUMENT IS NOT TO BE USED FOR CONSTRUCTION. IT IS THE PROPERTY OF CHENCHOW LITTLE PTY LTD. ALL RIGHTS RESERVED. NO PART OF THIS DOCUMENT IS TO BE REPRODUCED OR TRANSMITTED IN ANY FORM OR BY ANY MEANS, ELECTRONIC OR MECHANICAL, INCLUDING PHOTOCOPYING, RECORDING, OR BY ANY INFORMATION STORAGE AND RETRIEVAL SYSTEM, WITHOUT THE WRITTEN PERMISSION OF CHENCHOW LITTLE PTY LTD. ANY UNAUTHORIZED USE OF THIS DOCUMENT IS STRICTLY PROHIBITED.

JOB TITLE:  
 BUILDING C: 55 OREGA AVENUE WATERLOO  
 BY OREGA AVENUE DEVELOPMENT PTY LTD

DRAWING TITLE:  
 SECTION DD

DATE:  
 JULY 2015

DRAWN BY:  
 L, K/F

CHECKED BY:  
 TCC

DRAWING NO:  
 C-DA-3103

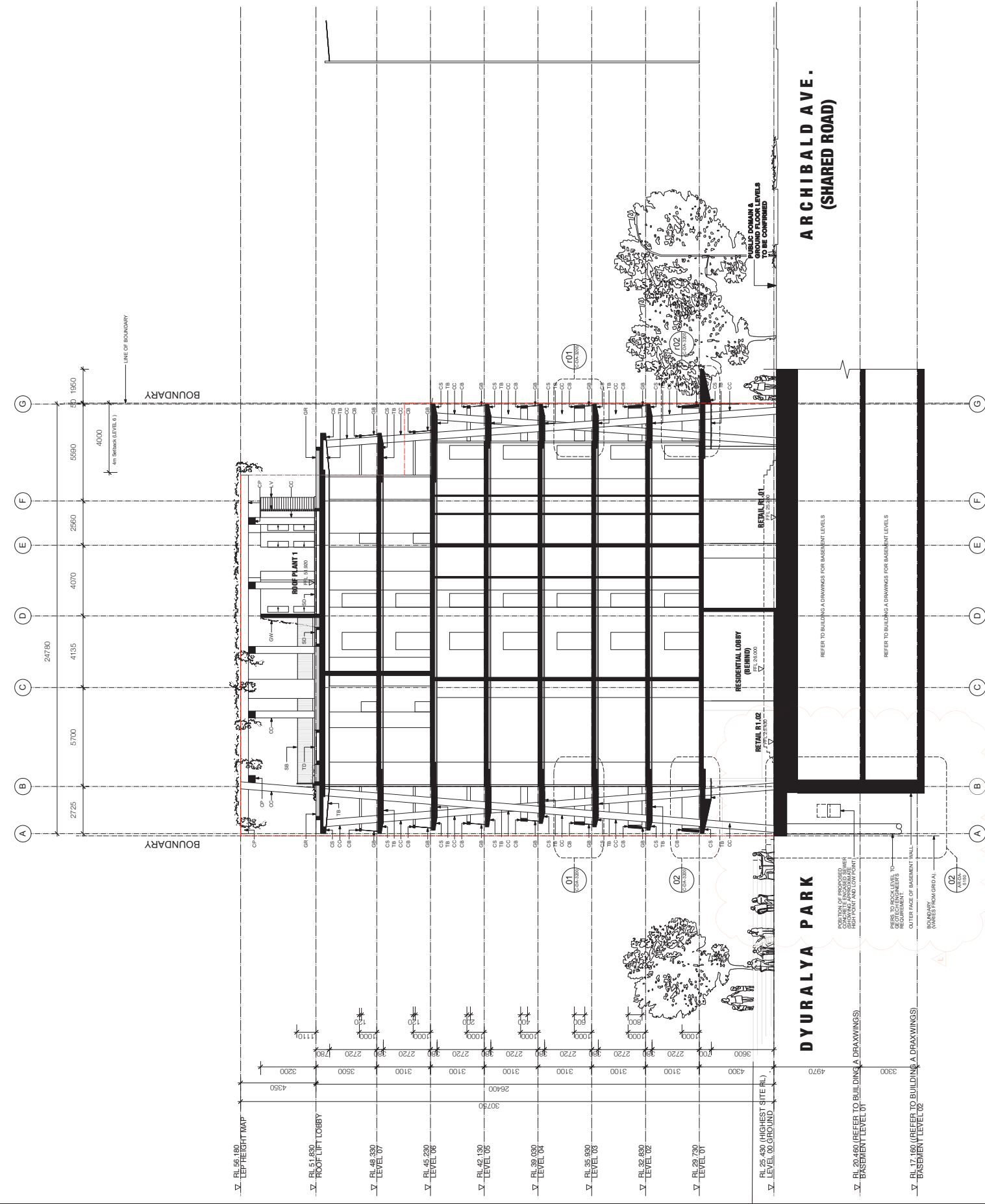
SCALE:  
 1:1000 (A1)

JOB NO:  
 .

NO IN SET:  
 L

AMENDMENT:  
 .

0 10 20 30 40 50 60 70 80 90 100mm  
 FULL SIZE ON ORIGINAL



## ARCHIBALD AVE. (SHARED ROAD)

## DYURALYA PARK

REFER TO BUILDING A DRAWINGS FOR BASEMENT LEVELS

REFER TO BUILDING A DRAWINGS FOR BASEMENT LEVELS

RL 20.460 (REFER TO BUILDING A DRAWINGS)  
 BASEMENT LEVEL 01

RL 17.160 (REFER TO BUILDING A DRAWINGS)  
 BASEMENT LEVEL 02

POSITION OF PROPOSED CURB WALL TO BE SHOWN IN BUILDING A DRAWINGS

PERF TO ROCK LEVEL TO REQUIREMENTS

OUTER FACE OF BASEMENT WALL TO BE SHOWN IN BUILDING A DRAWINGS (PARTS FROM GRID A)

REBAR 01  
 RL 26.000

REBAR 02  
 RL 25.000

